



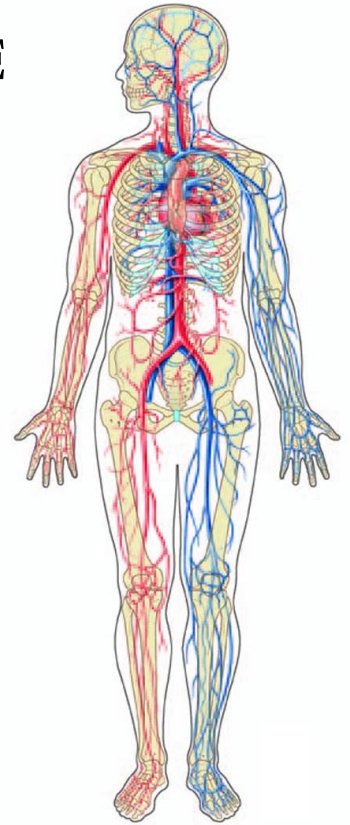
# IMPERIAL VALLEY COLLEGE

## BIOL 202 (10220)

### Human Anatomy & Physiology II

Fall 2013

4 Credits



**Instructor:** Ms. Susan MOSS, Associate Professor of Biology

**Office:** 2779

**Office Phone Number:** 760-355-5760

**Email:** susan.moss@imperial.edu

**Office Hours:** Tuesday & Thursday 10:00 – 11:30 am  
Wednesday & Friday 1:30 – 2:00 pm

**Lecture:** Tuesday & Thursday 1:30 – 2:25 room 2726

*Independent Study Time* 2:25 – 3:00

**Lab:** Tuesday & Thursday 3:00 – 5:45 room 2736

#### Required:

► **Textbooks (same as BIOL 200):**

*Anatomy & Physiology: The Unity of Form and Function*, Saladin, 6<sup>th</sup> edition

*Human Anatomy & Physiology Laboratory Manual*, Marieb & Mitchell, 11<sup>th</sup> edition

► **Safety glasses**

**Recommended Materials:** blank index cards (lots!), colored pencils, highlighters, camera

#### General Class Policies

- Attendance and punctuality are required. I start on time and expect you to be seated by the time class starts and I begin taking roll. If tardiness becomes a problem, I will start locking out late arrivers.
- Disruptive, inappropriate, or offensive behavior of any kind will not be tolerated and may result in your being dropped from the course.
- This course is conducted solely in English. Only English may be spoken when lecture or lab is in session.
- No sleeping in class. You will be required to leave the room.
- Only voice recorders may be used to record lectures. Videotaping is never allowed.
- If your cell phone starts ringing, **10** points will be deducted from your final point total.
- No open food or drink containers are allowed in the classroom or lab.
- Safety glasses must be worn and long hair tied back when experiments and dissections are done in lab.

#### Attendance Policy

- Each lecture & lab is considered a **separate** instructional period.
- Each missed instructional period earns you **2** strikes.
- Each time you are late earns you **1** strike.
- If you reach **12** strikes, you will be dropped from the course.
- There are no “excused” absences. **Every absence counts against you.**

## Blackboard (<https://imperial.blackboard.com/>)

PowerPoint slide shows will be available for viewing through your Blackboard account. NOTE: The slides shows posted on BB will not be identical to what's shown in class.

Exam & practical scores will also be posted so that you can keep track of your test average.

## Cheating Policy

Evidence of cheating will result in a zero grade for that quiz/test/practical and possible disciplinary action as well. Please notify me if you see evidence of cheating.

## Course Description

The interrelationship of structure and function of each body system will be presented in two semesters. The second semester will focus on these systems: endocrine, cardiovascular, respiratory, lymphatic/immune, digestive, urinary, & reproductive.

## Course Objectives

- The student will describe the structure and function of the endocrine system, cardiovascular system, lymphatic system, respiratory system, urinary system, digestive system, and reproductive systems.
- The student will discuss human heredity and the developmental stages from fertilization to birth.
- The student will discuss changes within the human organism due to the aging process.

## Student Learning Outcomes

- Display critical thought related to key concepts in human anatomy and physiology using written forms of expression and examination.
- Display effective communication skills related to topics in human anatomy & physiology.
- Display ability to read, comprehend, summarize and orally present research articles related to human anatomy & physiology.
- Display an understanding of global human health issues.

## IVC Withdrawal Policy

- ▶ The deadline for dropping a course without it appearing on your transcript is September 2<sup>nd</sup>.
- ▶ The deadline for dropping the course is November 9<sup>th</sup>.

## Exams

Six lecture exams will be given. All exams are based on class notes/activities and will include multiple-choice, fill-in, true/false, short answer, and matching questions. There may also be diagrams to label. Exams will take place during the lab period, and you will have a maximum of **2 hours** to complete them.

**Make-up Exam Policy:** To be eligible for a make-up exam, you must notify me (by phone or email) **before the start of the exam** as to why you cannot be present for the exam. Make-up exams must be taken within one week of the scheduled exam day. No more than ONE exam may be made up.

## EXAM-TAKING RULES:

- ◆ Long hair must be tied back.
- ◆ No hats or hoods may be worn.
- ◆ Hands must remain on top of the table.
- ◆ Test pages must be folded under when you turn a page.
- ◆ For matching, **capital** letters must be used.
- ◆ Black pen must be used for labeling.

## Extra Credit

The only opportunities for extra credit points will be in the form of **bonus questions** on exams.

## Quizzes

Throughout the semester, quizzes will be given at the beginning of the lecture period. The quizzes will mainly cover concepts in the text that are not covered in lecture. The quizzes will be timed (10 min.). If you arrive late, you will not be given extra time. **Your lowest quiz score will be dropped.**

There are NO make-up quizzes given for any reason.

## Laboratory – Policy & Procedures

- You will be responsible for conducting yourself properly and safely during lab. This includes: handling materials and equipment carefully, following instructions, wearing safety glasses and keeping hair tied back when doing experiments & dissections, putting items back where you found them, and cleaning your area before leaving.
- Lab work will consist of material taken from the laboratory manual and any additional worksheets assigned. For some labs, you will be required to turn in a lab report. **Only original pages from the lab manual will be accepted.**
- For computer activities, no more than 2 people may work together.
- For all other activities, no more than 3 people may work together.
- All group members must participate in **all** activities.
- ONE lab report is turned in per group.
- Everyone in a group will receive the same grade.
- Each group member must write his/her **own** name on lab reports.
- There will be four LAB PRACTICAL exams. Most practical questions are recall-type questions. No make-up lab practicals will be given. **If you notify me in advance** that you have to miss a practical **and** you have a legitimate excuse with supporting documentation, I will prorate the first missed practical. Any other missed practicals will receive a zero.

**Missed labs cannot be made up.**

## Spelling

Spelling of structures and terms counts on ALL exams and practicals. The penalty for each spelling error is ½ point. Scores that end up in the middle of two numbers due to spelling errors will be rounded **down**.

## Oral Presentation – Global Health Issue

Choose a presentation topic that focuses on a problem/disease/disorder that relates to material covered in this course. It can be a vector-borne disease, genetic disorder, injury-related problem, or lifestyle-related problem.

You will be required to independently research and present your topic to the class. Presentations should last **6-7 minutes** and a PowerPoint slide show is required.

**Important: Your topic must be pre-approved by October 1<sup>st</sup> or you forfeit the assignment.**

## ADA Statement

Any student with a documented disability who may need educational accommodations should notify the Disabled Student Program & Services (DSP&S) office (760-355-6312, room 2117, Health Sciences Bldg) as soon as possible.

## Gifts

Please note that I am not able to accept gifts of any kind.

## Grading

Final grades are calculated using a simple point system. Your grade will be based on the total points you earn divided by the total points possible. The grading scale will be:

- A  $\geq$  90 %
- B = 80-89 %
- C = 70-79 %
- D = 60-69 %
- F  $\leq$  59 %

- ◆ Exams: 150 pts. each
- ◆ Lab Practicals: 60 pts each
- ◆ Quizzes: 20 pts each
- ◆ Lab reports and class activities: 10-20 pts each
- ◆ Oral presentation: 30 pts
- ◆ Participation, Class Conduct, Misc.: 20 pts.

*“Participation” means asking questions, answering questions, contributing thoughts and opinions.*

*“Class Conduct” means following class policies & procedures.*

**IMPORTANT:** ➤ If your overall combined exam & practical average is below 60%, you will automatically receive an **“F”** for the course.



➤ If your overall combined exam & practical average is 60 – 69%, you will automatically receive a **“D”** for the course.





## Schedule

**IMPORTANT:** *Schedule is tentative and subject to change.*

**LECTURE @ 1:30**

**LAB @ 3:00**

8/20	Introduction	Review key concepts
8/22	Ch 17 – Endocrine System	Diffusion; Surface to volume ratio 
8-27	Ch 17 – Endocrine System; <b>Q1</b>	Endocrine – PhysioEx Experiments
8-29	Ch 18 – Blood	Blood and blood typing
9-3	Independent Study Time Office Hour in 2736	<b>EXAM 1 (Key Concepts, Endocrine)</b>
9-5	Ch 19 & 20 – Heart & Vessels	Blood Vessels
9-10	Optional Open Lab	<b>LAB PRACTICAL 1 @ 4:30</b> diffusion, S/V, endocrine PhysioEx, blood lab
9-12	Ch 19 & 20 – Heart & Vessels; <b>Q2</b>	Heart 
9-17	Ch 22 – Respiratory System	Respiratory – PhysioEx Experiments
9-19	Independent Study Time Office Hour in 2736	<b>EXAM 2 (Cardiovascular)</b>
9-24	Ch 22 – Respiratory System	Interactive Phys CD – Respiratory System
9-26	<b>BLOOD VESSEL ID TEST</b> <b>1:30 – 2:30</b> <b>2736</b>	<b>Open Lab 2:35 – 3:35</b> <b>LAB PRACTICAL 2 @ 5:00</b> heart, respiratory
10-1	Ch 21 – Lymphatic System & Defense; Presentation topic due	Nutrition Internet Assignment
10-3	Ch 21 – Lymphatic System & Defense; <b>Q3</b>	Interactive Phys CD – Immune System
10-8	Ch 25 – Digestive System	Digestion – PhysioEx Enzyme Experiments
10-10	Independent Study Time Office Hour in 2736	<b>EXAM 3 (Lymphatic, Defense, Immune, Respiratory)</b>

10-15	Ch 26 – Cellular Respiration	PRESENTATIONS
10-17	Ch 23 – Urinary System; <b>Q4</b>	PRESENTATIONS
10-22	Optional Open Lab	<b>LAB PRACTICAL 3 @ 4:30</b> Digestive, enzyme PhysioEx
10-24	Ch 23 – Urinary System	Renal – PhysioEx experiments
10-29	Independent Study Time Office Hour in 2736	<b>EXAM 4 (Digestive, Nutrition, Cellular Respiration)</b>
10-31	Ch 24 – Water, electrolyte & Acid-Base Balance; <b>Q5</b>	Interactive Phys CD -- Water, electrolyte & Acid-Base Balance
11-5	Ch 27 & 28 – Reproductive Systems	CADAVER Observation and QUIZ
11-7	Ch 27 & 28 – Reproductive Systems	Reproductive Systems “Brain Sex” video
11-12	Independent Study Time Office Hour in 2736	<b>EXAM 5 (Urinary System, Water, Electrolyte &amp; Acid-Base Balance)</b>
11-14	Ch 29 – Pregnancy & Development; <b>Q6</b>	Fetal Pig Dissection 
11-19	Ch 29 – Pregnancy & Development	Fetal Pig Dissection <b>Fetal Pig Review and QUIZ</b> 
11-21	Ch 4 – Genetics & Heredity	Genetics & Heredity
11-26	Optional Open Lab	<b>LAB PRACTICAL 4 @ 4:30</b> Urinary, Reproductive, Pregnancy/Development
11/28		<b>NO SCHOOL</b> 
12-3	Independent Study Time Office Hour in 2736	<b>EXAM 6</b> <b>(Reproductive Systems, Pregnancy &amp; Development, Genetics &amp; Heredity)</b>



*Days when safety glasses are required.*

*Keep track of your grades...*

DESCRIPTION	MY SCORE	POINT VALUE
EXAM 1		150
EXAM 2		150
EXAM 3		150
EXAM 4		150
EXAM 5		150
EXAM 6		150
LAB PRACTICAL 1		60
LAB PRACTICAL 2		60
LAB PRACTICAL 3		60
LAB PRACTICAL 4		60
BLOOD VESSEL EXAM		60
FETAL PIG QUIZ		20
ORAL PRESENTATION		30
QUIZ 1		20
QUIZ 2		20
QUIZ 3		20
QUIZ 4		20
QUIZ 5		20
QUIZ 6		20

