

CIS 149  
Photoshop CS4  
Fall 2012  
3 Credits

Professor Andres David Martinez

## Course Description

The course includes an introduction to the basic working environment of Photoshop; basic photo corrections; retouching and repairing; working with selections; layer basics; masks and channels; correcting and enhancing digital photographs; advanced layer techniques; advanced compositing; and web publishing techniques. The student will create an integrated project that simulates a real-world graphic design job, drawing on the skills learned.

## Course Objectives

1. Experiment with the work environment, including the toolbox and the help features.
2. Straighten and crop an image, make manual and automatic adjustments, adjust colors, lightness and saturation, apply a filter.
3. Use the retouching and repairing tools.
4. Use the selection tools to select, rotate, and crop an image.
5. Use the layers palette, rearrange layers, apply layer style, and flatten and save files.
6. Create, edit and save, and adjust a mask as well as apply a filter and effects to a masked selection.
7. Process camera raw files, correct digital photographs, and edit images.
8. Create layers, import a layer from another file, apply layer styles, and experiment with layers.
9. Set up a four-image montage, change color balance, and apply filters.
10. Create and remove rollovers.
11. Create animations.
12. Specify color-management setting, proof an image, and adjust an image and printing proof.
13. Create an integrated project that simulates a real-world graphic design job demonstrating application skills including correcting, retouching, repairing, and enhancing photos; working with selections, layers, masks and channels; compositing; and web publishing techniques.

## Student Learning Outcomes

1. Utilize several Photoshop tools and tactics learned throughout the course to design, create, and produce a professional quality magazine cover.
2. Utilize brush up techniques to restore and enhance digital photos for real job scenarios.

## Topics Covered

PS Interface  
Basic Photo Corrections  
Retouching and Repairing  
Working with Selections  
Layer Basics  
Advanced Layer and Color Channels  
Correcting and Enhancing Digital Photos

Advanced Layer Techniques  
Advanced Compositing  
Working with Lighting  
Working with Filters  
Colorizing Artwork

## Course Textbooks

### Adobe Photoshop CS6 Classroom in a Book

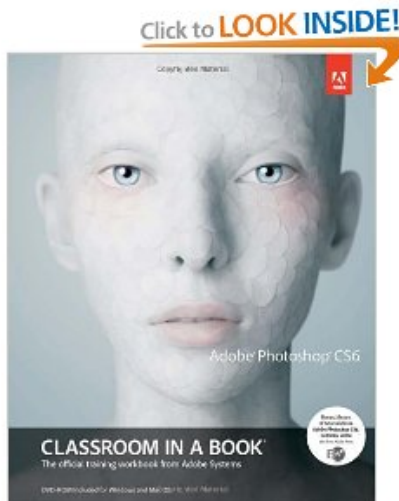
Adobe Creative Team

ISBN-10: 0-321-82733-3

ISBN-13: 978-0-321-82733-3

Copyright: 2012

\$54.99



## Additional Hardware and Software

A USB thumb drive is recommended for this course (At least 8GB). It will be used to store and backup your assignments. You will need time outside of class to work on assignments. A personal copy of Photoshop CS6 would be best. You can download a full version trial that is good for 30 days on [www.adobe.com](http://www.adobe.com)

## Student Email & DropBox

All students now have an imperial.edu email address. Along with the new email account, you have access to a 25GB dropbox!

## Blackboard

Access the Blackboard course site for assignments, test, and supplemental course materials at <http://imperial.blackboard.com>

## **Labs**

2610 Building Lab is equipped with the entire CS4 Suite. \*It does not contain the CS6 Suite

Monday – Thursday 8:30am – 7:45pm\*

Friday 8:30am – 3:00pm\*

\*subject to change

## **Grading**

### **Breakdown**

Assignments (10) 5 pts each

Quizzes (10) 1 pt each

Projects (2) 10 pts each

Final Project (1) 20 pts

*\*Grade breakdown is subject to change*

## **Points**

90-100 A

89-80 B

79-70 C

69-60 D

59 – 0 F

## **Instructor Contact Information**

Andres David Martinez

Office: 1501 Library

Phone: 760.355.6126

Text/Cell: 760.554.7949

Email: [Andres.martinez@imperial.edu](mailto:Andres.martinez@imperial.edu)

## **Need for assistance**

Need for assistance: If you have any condition, such as a physical or learning disability, for which you need extra assistance, please provide me with information regarding your special needs as soon as possible so that appropriate accommodations can be made. You should also meet with the Disabled Student Programs & Services support staff and counselors.